



Company : CO2CRC

Well : CRC-1

Interval : 2.75 - 314.04 meters

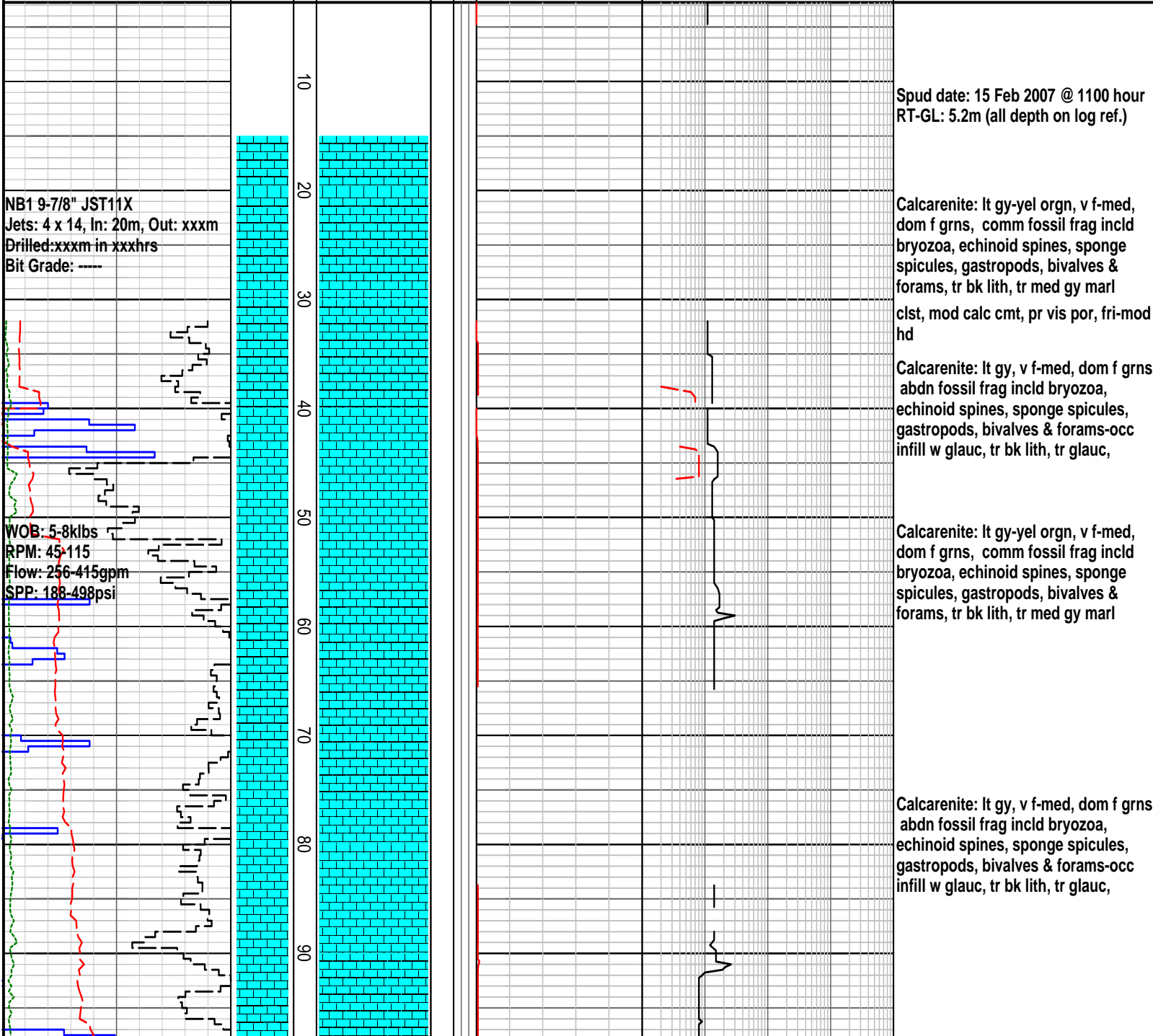
Created : 16/Feb/2007 6:20:44 AM



INTEQ

### FORMATION EVALUATION LOG

RATE OF PENETRATION		MD meters :500	LITHOLOGY	CORE	OIL SHOWS	TOTAL GAS	CHROMATOGRAPH	REMARKS
ROP (0-50m/hr)	Backup ROP (50-200m/hr)					0.1   0.2   0.3   0.4   0.5 %	1 Methane ppm 10000	
50   45   40   35   30   25   20   15   10   5	200   185   170   155   140   125   110   95   80   65					1 Ethane ppm 10000		
WOB (klb)						1 Propane ppm 10000		
TORQUE AVG						1 iso-Butane ppm 10000		
5   10   15   20   25   30   35   40   45   50	5   10   15   20   25   30   35   40   45   50					1 n-Butane ppm 10000		
						1 iso-Pentane ppm 10000		
						n-Pentane ppm		
						10   100   1000   10000		

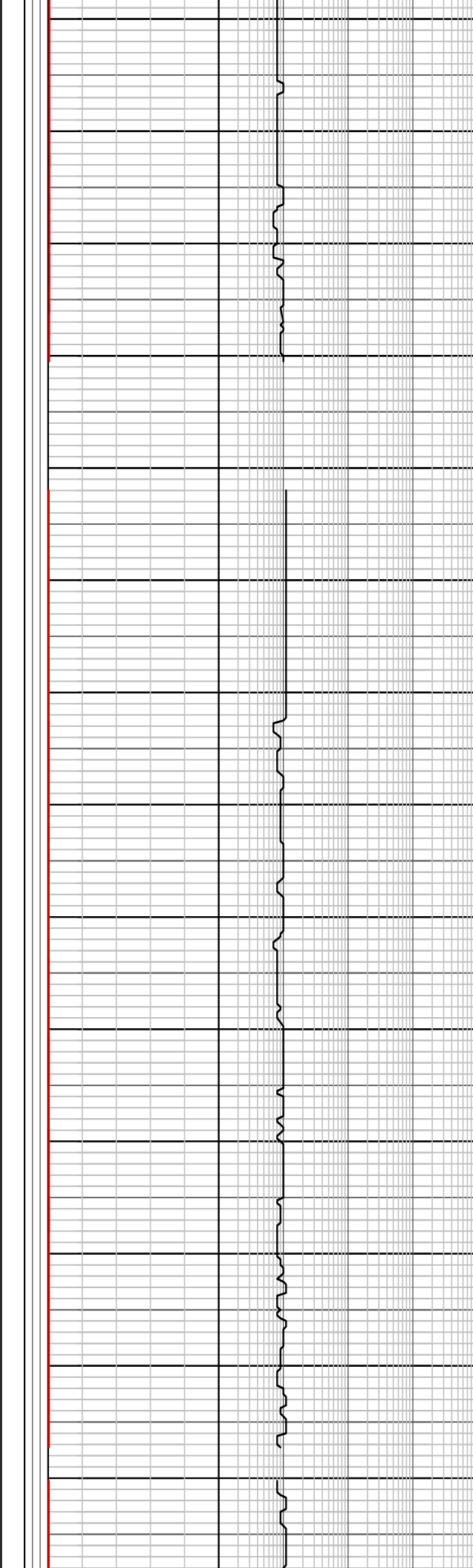
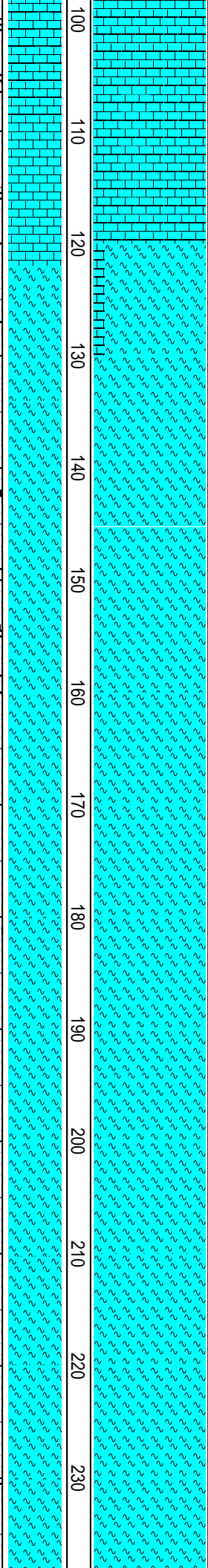


WOB: 6-20klbs  
RPM: 65-130  
Flow: 262-465gpm  
SPP: 184-660psi

From: 130-142m  
MISSING DATA DUE TO POWER FAILURES

WOB: 5-20klbs  
RPM: 79-125  
Flow: 371-470gpm  
SPP: 72-844psi

WOB: 4-14klbs  
RPM: 40-106  
Flow: 249-256gpm  
SPP: 815-1094psi



Calcarenite: lt gy-yel orgn, v f-med, dom f grns, comm fossil frag incld bryozoa, echinoid spines, sponge spicules, gastropods, bivalves & forams, tr bk lith, tr med gy marl

MWIN:9.05ppg Mud temp:28deg  
PV/YP:10/18 FV:50 Gels:13/15  
Solids:5.0% pH:8.5

Marl: med grn gy- med brn gy, com abnt fos frags incl bryozoa, forams, bivalves,gastropods, sponge spicules,& echinoid spns, rr glauc, v sft,stky, non fiss

Survey @ 131m = 0.25 deg incl

Marl: med grn gy-med brn gy,occ med-dk gy, abnt fos frags incl bryozoa, forams,bivalves,gastropod, sponge spicules & echionoid spns, rr glauc,rr pyr, rr blk coaly det, v sft,stky, no fiss

Marl: med grn gy- occ med brn gy,occ med-dk gy, abnt fos frags incl bryozoa, forams,bivalves,gastropod, sponge spicules & echionoid spns, rr glauc,rr pyr, rr blk coaly det, v sft,stky, no fiss

MWIN:8.90ppg Mud temp:38deg  
PV/YP:7/15 FV:45 Gels:11/21  
Solids:3.9% pH:9.0

Marl: med-med gn gy-med br gy, med-dk gy, abnt fos frags incl bryozoa, forams,bivalves,gastropod, sponge spicules & echionoid spns, rr glauc,rr pyr, rr blk coaly det, v sft,stky, no fiss

